

For Residential and Commercial Applications


Job Name		Engineer / Architect	
Job Location		Wholesaler	
Submittal Date		Contractor	

19 Series Compression x Sweat Elbows

Use: For use with potable and non-potable water, instrumentation, hydraulic, and pneumatic systems. Designed for use with aluminum, copper, and plastic tubing*. Not intended for use with steel tubing.

* Plastic tubing requires a plastic insert and a sleeve (see 60PT & 63PT submittal forms for details)

Design Features:

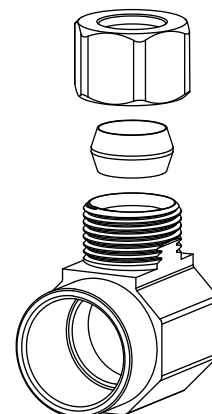
- **Little to no tube preparation.** Compression fittings do not require flaring, soldering, or other types of tube preparation
-  **No-lead available**

Operating Specifications:

Temperature: -65° - 250° F at maximum operating pressures

Working Pressure: See chart below

Vibration: Fair vibration resistance



WORKING PRESSURE

PSI	Tube OD	Tube Wall (Inches)
200	3/8	0.032
200	1/2	0.032

Standard Product

MATERIAL SPECIFICATIONS

Body	Brass
Compression Sleeve	Brass
Compression Nut	Brass
Option	Chrome plating

Standard Part Listing:

<input type="checkbox"/>	19 C	1/2" nom sweat x 3/8" OD tube, chrome plated
<input type="checkbox"/>	19 R	1/2" nom sweat x 3/8" OD tube, rough brass
<input type="checkbox"/>	19 CBT	1/2" nom sweat x 3/8" OD tube, chrome plated, plain tray, bulk
<input type="checkbox"/>	19 RBT	1/2" nom sweat x 3/8" OD tube, rough brass, plain tray, bulk
<input type="checkbox"/>	19-2 CBT	1/2" nom sweat x 3/8" OD tube - body only, chrome plated, plain tray, bulk
<input type="checkbox"/>	19-2 RBT	1/2" nom sweat x 3/8" OD tube - body only, rough brass, plain tray, bulk

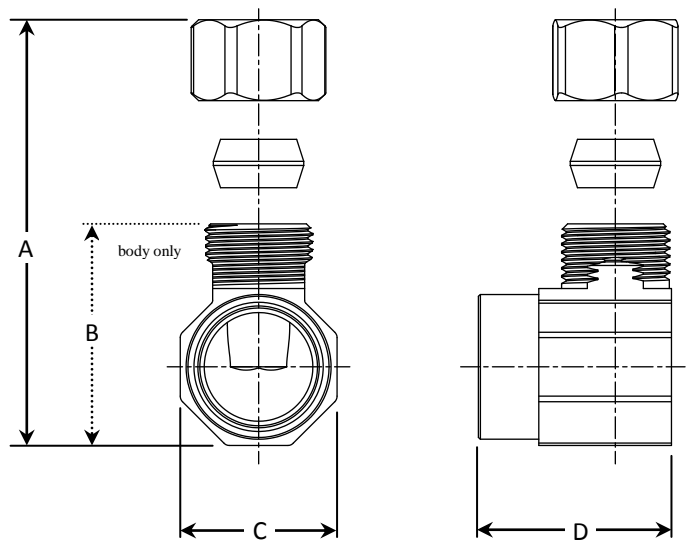
This specification and all information contained herein is the confidential and exclusive property of BrassCraft Manufacturing, and shall not be disclosed to others without the written consent of BrassCraft Mfg. This specification must be returned to BrassCraft Mfg. if requested.

BrassCraft®

19 Series

Compression x Sweat Elbows

PART DIMENSIONS (Inches)				
Model	DIM. A	DIM. B	DIM. C	DIM. D
19	1.42	1.15	.81	1.03



This specification and all information contained herein is the confidential and exclusive property of BrassCraft Manufacturing, and shall not be disclosed to others without the written consent of BrassCraft Mfg. This specification must be returned to BrassCraft Mfg. if requested.